



# DELTA TEE

STANDARD REFRIGERATION VESSELS & SYSTEMS

**DELTA TEE INTERNATIONAL INC.**

1000 Commercial Blvd. South  
Arlington, TX 76001 USA  
T 817 466 9991 - F 817 466 9979  
[www.delta-tee.com](http://www.delta-tee.com)

Data provided for informational purposes and should not be used in actual design.  
Please consult factory for specific detailed engineered information.

## HORIZONTAL RECIRCULATORS

- Fully shop assembled and shipped as a single unit as permitted for transportation to minimize installation and commissioning time.
- Low NPSH sealless stainless steel pumps with double containment chamber canned motor for reliable leak-free operation with liquid refrigerants.
- Microprocessor controller in NEMA 4 steel enclosure for fully automated operation, with communication capabilities with plant control system for remote monitoring and/or control. Stainless steel NEMA AX enclosure available upon request.
- Full voltage pump motor starters integrated within controller enclosure with main disconnect or in separate enclosure. Soft start starters available upon request.
- ASME VIII Div 1 vessels and ASME B31.5 piping assembly.
- Available in stainless steel including vessels, piping, valves and structural base as requested.
- Consult factory for capacities with refrigerants other than ammonia (CO<sub>2</sub>, R-507, etc.).



**HORIZONTAL RECIRCULATOR PACKAGE CAPACITIES T.R. R-717**

MODEL NO.	SINGLE STAGE (1)						2-STAGE (2)				R-717 CHARGE Lb (3)	SURGE VOLUME CU. FT
	OPERATING TEMPERATURE						OPERATING TEMPERATURE					
	30°F	20°F	10°F	0°F	-10°F	-20°F	-20°F	-30°F	-40°F	-50°F		
DPRP-24136-H	112	102	91	82	73	64	75	66	58	50	379	7
DPRP30139-H	188	170	153	137	121	107	126	110	96	83	440	15.4
DPRP-36142-H	282	255	230	205	183	161	189	166	145	125	494	26.4
DPRP-42145-H	396	358	322	288	256	226	265	233	203	176	529	39.8
DPRP-48148-H	529	478	430	385	342	302	354	311	271	235	813	50.5
DPRP-54151-H	674	610	548	490	436	385	452	397	346	299	875	69.3
DPRP-60154-H	837	757	681	609	541	478	561	493	429	371	935	91
DPRP-72160-H	1234	1115	1003	897	797	704	826	726	633	547	1023	143.1
DPRP-84166-H	1696	1533	1379	1233	1096	968	1136	998	870	752	1477	198.6
DPRP-96172-H	2244	2029	1824	1631	1450	1281	1503	1320	1151	995	1605	276.8
DPRP-108178-H	2855	2581	2321	2075	1845	1629	1912	1679	1464	1266	1663	366.6
DPRP-120184-H	3539	3199	2877	2572	2287	2020	2370	2081	1814	1569	1775	473.9
DPRP-144196-H	5145	4651	4183	3740	3325	2936	3446	3026	2638	2281	1985	737.1

1. Single Stage based on 95°F Liquid Make Up
2. Two-Stage based on 25°F Liquid Make Up
3. Operating charge is based on Ammonia at 0°F

Data provided for informational purposes and should not be used in actual design. Please consult factory for specific detailed engineered information.

## VERTICAL RECIRCULATORS

- Fully shop assembled and shipped as a single unit as permitted for transportation to minimize installation and commissioning time.
- Low NPSH sealless stainless steel pumps with double containment chamber canned motor for reliable leak-free operation with liquid refrigerants.
- Microprocessor controller in NEMA 4 steel enclosure for fully automated operation, with communication capabilities with plant control system for remote monitoring and/or control. Stainless steel NEMA AX enclosure available upon request.
- Full voltage pump motor starters integrated within controller enclosure with main disconnect or in separate enclosure. Soft start starters available upon request.
- ASME VIII Div 1 vessels and ASME B31.5 piping assembly.
- Available in stainless steel including vessels, piping, valves and structural base as requested.
- Consult factory for capacities with refrigerants other than ammonia (CO<sub>2</sub>, R-507, etc.).



TABLE 1 VERTICAL RECIRCULATOR PACKAGE CAPACITIES T.R. R-717

MODEL NO.	SINGLE STAGE (1)						2-STAGE (2)				R-717 CHARGE Lb (3)	SURGE VOLUME CU. FT
	OPERATING TEMPERATURE						OPERATING TEMPERATURE					
	30°F	20°F	10°F	0°F	-10°F	-20°F	-20°F	-30°F	-40°F	-50°F		
DPRP-24136-V	144	130	117	104	93	82	96	84	74	64	119	12.8
DPRP30139-V	227	205	185	165	147	130	152	134	117	101	180	19.8
DPRP-36142-V	330	298	268	240	213	188	221	194	169	146	250	30.5
DPRP-42145-V	452	408	367	329	292	258	303	266	232	200	445	56.5
DPRP-48148-V	593	536	482	431	383	338	397	349	304	263	564	76.3
DPRP-54151-V	746	674	606	542	482	426	500	439	383	331	691	91.9
DPRP-60154-V	917	829	745	666	592	523	614	539	470	406	823	117.1
DPRP-72160-V	1330	1202	1081	967	859	759	891	782	682	589	1,644	150.2
DPRP-84166-V	1808	1634	1470	1314	1168	1031	1211	1063	927	802	2,094	210.4
DPRP-96172-V	2373	2144	1928	1724	1533	1353	1589	1395	1216	1052	2,580	267.9
DPRP-108178-V	2999	2710	2437	2180	1938	1711	2008	1764	1537	1329	4,258	306.4
DPRP-120184-V	3699	3342	3006	2689	2390	2110	2477	2175	1896	1640	5,015	392.4
DPRP-144196-V	5338	4823	4338	3880	3449	3045	3575	3139	2736	2366	6,532	567.6

1. Single Stage based on 95°F Liquid Make Up
2. Two-Stage based on 25°F Liquid Make Up
3. Operating charge is based on Ammonia at 0°F

Data provided for informational purposes and should not be used in actual design. Please consult factory for specific detailed engineered information.

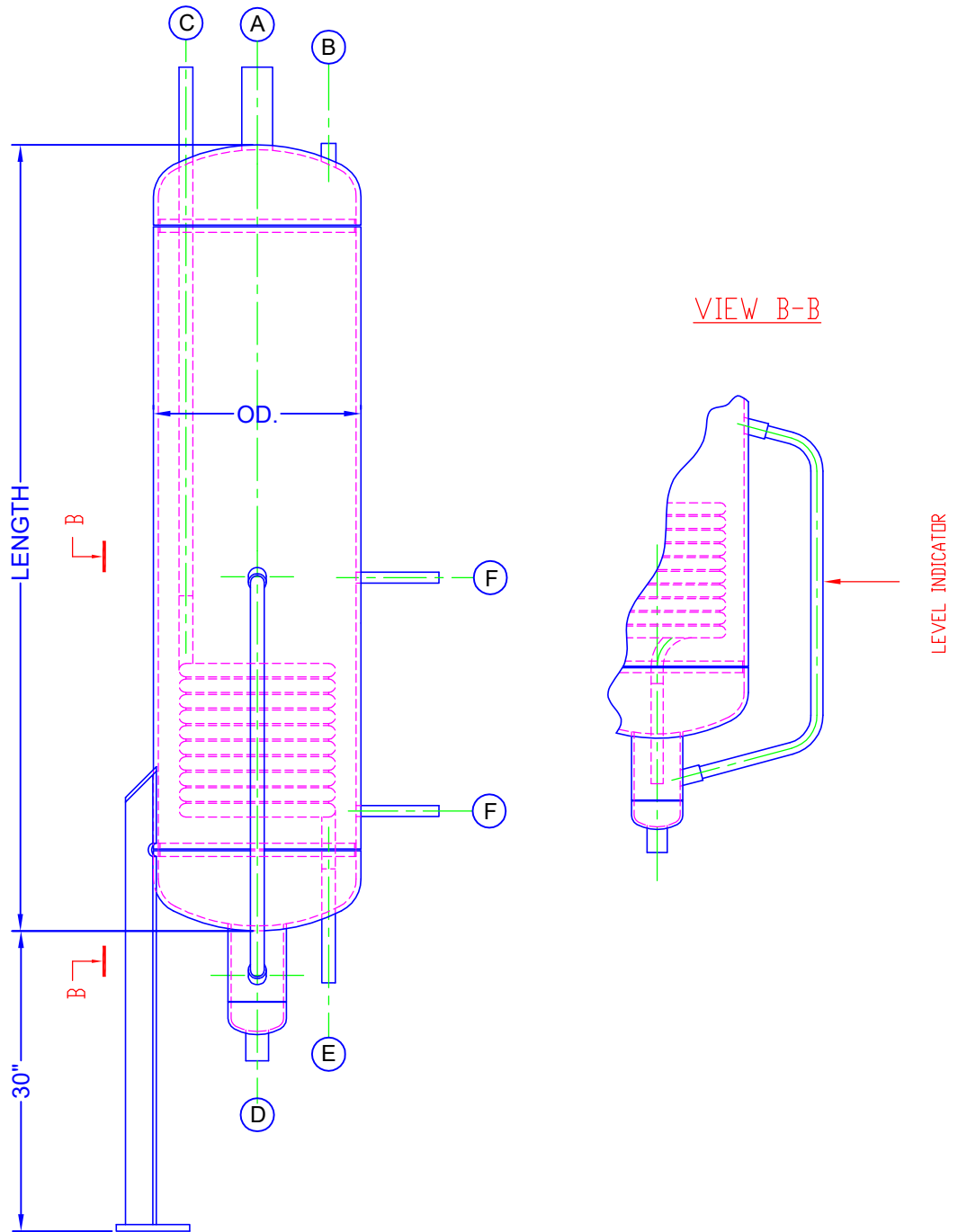


**DELTA TEE INTERNATIONAL, INC.**

1000 COMMERCIAL BLVD SOUTH #100, ARLINGTON, TX 76001

TEL: (817) 466-9991 FAX: (817) 466-9979

# AMMONIA DISTILLER VESSEL



MODEL NO.	DIA	OVERALL LENGTH	A	B	C	D	E	F
			SUCTION OUTLET	RELIEF	COIL INLET	DRAIN	COIL OUTLET	FLOAT VALVE
DDHV-1660-V	16	60	2	1/2	3/4	1	3/4	3/4

1. ALL DIMENSIONS ARE IN INCHES

Data provided for informational purposes and should not be used in actual design. Please consult factory for specific detailed engineered information.

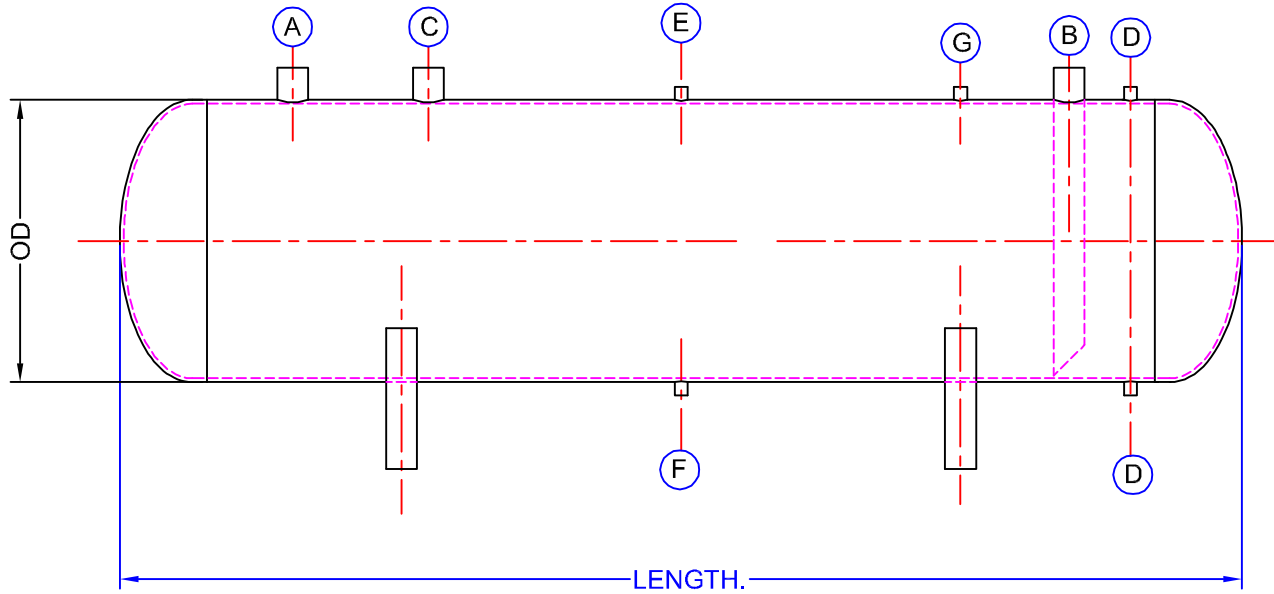


# DELTA TEE INTERNATIONAL, INC.

1000 COMMERCIAL BLVD SOUTH #100, ARLINGTON, TX 76001

TEL: (817) 466-9991 FAX: (817) 466-9979

## HORIZONTAL HIGH PRESSURE RECEIVER



### HORIZONTAL HIGH PRESSURE RECEIVER DIMENSIONS AND NOZZLES

MODEL NO.	DIA	OVERALL LENGTH	TOTAL VOLUME CU FT	HOLDING CAPACITY Lb R-717	A	B	C	D	E	F	G
					LIQUID INLET	LIQUID OUTLET	EQUAL	LEVEL COLUMN	RELIEF	DRAIN	PURGE
DHPR-20134-H	20	134	22	726	1-1/2	1	1	1-1/2	1	1	3/4
DHPR-24136-H	24	136	33	1,089	2	1	1	1-1/2	1	1	3/4
DHPR30141-H	30	141	53	1,749	2-1/2	1-1/4	1-1/4	1-1/2	1	1	3/4
DHPR-36142-H	36	142	78	2,574	3	1-1/2	1-1/2	1-1/2	1	1	3/4
DHPR-42145-H	42	145	108	3,564	3	1-1/2	2	1-1/2	1	1	3/4
DHPR-48148-H	48	148	143	4,719	4	2	2	1-1/2	1	1	3/4
DHPR-48268-H	48	268	266	8,779	5	2-1/2	2-1/2	1-1/2	1-1/2	1	3/4
DHPR-54151-H	54	151	184	6,073	4	2-1/2	2-1/2	1-1/2	1-1/2	1	3/4
DHPR-54271-H	54	271	340	11,221	6	3	3	1-1/2	1-1/2	1	3/4
DHPR-60154-H	60	154	230	7,591	5	2-1/2	2-1/2	1-1/2	1-1/2	1	3/4
DHPR-60274-H	60	274	422	13,927	6	3	3	1-1/2	1-1/2	1	3/4
DHPR-72160-H	72	160	342	11,287	6	3	3	1-1/2	1-1/2	1	3/4
DHPR-72280-H	72	280	620	20,462	8	4	4	1-1/2	1-1/2	1	3/4
DHPR-84166-H	84	166	478	15,775	8	4	4	1-1/2	1-1/2	1	3/4
DHPR-84286-H	84	286	856	28,251	10	5	5	1-1/2	1-1/2	1	3/4
DHPR-96172-H	96	172	642	21,188	10	5	4	1-1/2	1-1/2	1	3/4
DHPR-96292-H	96	292	1,137	37,524	10	5	5	1-1/2	1-1/2	1	3/4

1. ALL DIMENSIONS IN INCHES UNLESS NOTED OTHERWISE
2. AMMONIA HOLDING CAPACITY AT VESSEL 90% FULL AND LIQUID AMMONIA AT 95°F
3. CONSULT FACTORY FOR OTHER SIZES

Data provided for informational purposes and should not be used in actual design. Please consult factory for specific detailed engineered information.

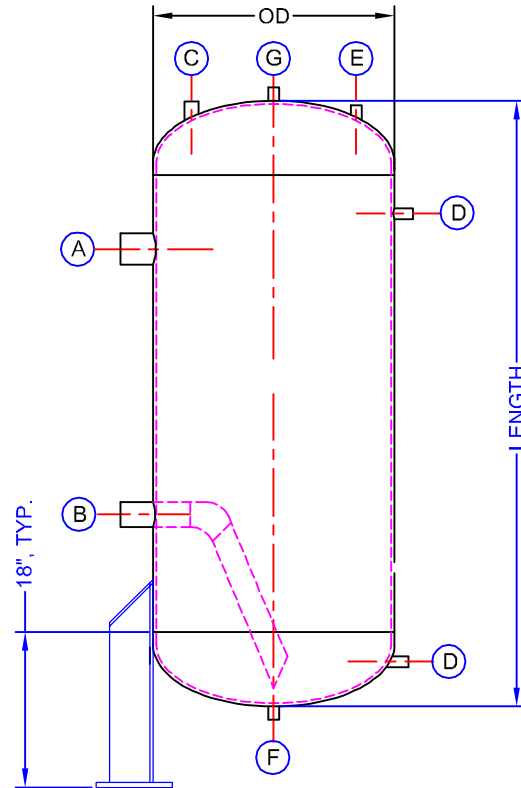


**DELTA TEE INTERNATIONAL, INC.**

1000 COMMERCIAL BLVD SOUTH #100, ARLINGTON, TX 76001

TEL: (817) 466-9991 FAX: (817) 466-9979

## VERTICAL HIGH PRESSURE RECEIVER



NOTE: ALL VESSEL LEGS  
NOT SHOWN FOR CLARITY

### VERTICAL HIGH PRESSURE RECEIVER DIMENSIONS AND NOZZLES

MODEL NO.	DIA	OVERALL LENGTH	TOTAL VOLUME CU FT	HOLDING CAPACITY lb R-717	A	B	C	D	E	F	G
					LIQUID INLET	LIQUID OUTLET	EQUAL	LEVEL COLUMN	RELIEF	DRAIN	PURGE
DHPR-20134-V	20	134	22	645	1-1/2	1	1	1-1/2	1	1	3/4
DHPR-24136-V	24	136	33	968	2	1	1	1-1/2	1	1	3/4
DHPR30141-V	30	139	53	1,555	2-1/2	1-1/4	1-1/4	1-1/2	1	1	3/4
DHPR-36142-V	36	142	78	2,288	3	1-1/2	1-1/2	1-1/2	1	1	3/4
DHPR-42145-V	42	145	108	3,168	3	1-1/2	2	1-1/2	1	1	3/4
DHPR-48148-V	48	148	143	4,195	4	2	2	1-1/2	1	1	3/4
DHPR-48220-V	48	220	217	6,366	5	2-1/2	2-1/2	1-1/2	1-1/2	1	3/4
DHPR-54151-V	54	151	184	5,398	5	2-1/2	2-1/2	1-1/2	1-1/2	1	3/4
DHPR-54199-V	54	199	246	7,217	5	2-1/2	2-1/2	1-1/2	1-1/2	1	3/4
DHPR-54223-V	54	223	278	8,155	6	2-1/2	2-1/2	1-1/2	1-1/2	1	3/4
DHPR-60154-V	60	154	230	6,747	5	3	3	1-1/2	1-1/2	1	3/4
DHPR-60202-V	60	202	307	9,006	6	3	3	1-1/2	1-1/2	1	3/4
DHPR-60226-V	60	226	345	10,121	6	3	3	1-1/2	1-1/2	1	3/4
DHPR-72160-V	72	160	342	10,033	6	3	3	1-1/2	1-1/2	1	3/4
DHPR-72208-V	72	208	453	13,289	6	3	3	1-1/2	1-1/2	1	3/4
DHPR-72232-V	72	232	508	14,903	6	4	4	1-1/2	1-1/2	1	3/4
DHPR-84166-V	84	166	478	14,023	6	4	4	1-1/2	1-1/2	1	3/4
DHPR-84214-V	84	214	629	18,452	8	4	4	1-1/2	1-1/2	1	3/4
DHPR-84238-V	84	238	704	20,653	8	5	5	1-1/2	1-1/2	1	3/4
DHPR-96172-V	96	172	642	18,834	8	4	4	1-1/2	1-1/2	1	3/4
DHPR-96220-V	96	220	840	24,642	10	5	5	1-1/2	1-1/2	1	3/4
DHPR-96244-V	96	244	939	27,547	10	5	5	1-1/2	1-1/2	1	3/4

1. ALL DIMENSIONS IN INCHES UNLESS NOTED OTHERWISE
2. AMMONIA HOLDING CAPACITY AT VESSEL 80% FULL AND LIQUID AMMONIA AT 95°
3. CONSULT FACTORY FOR OTHER SIZES

Data provided for informational purposes and should not be used in actual design.  
Please consult factory for specific detailed engineered information.

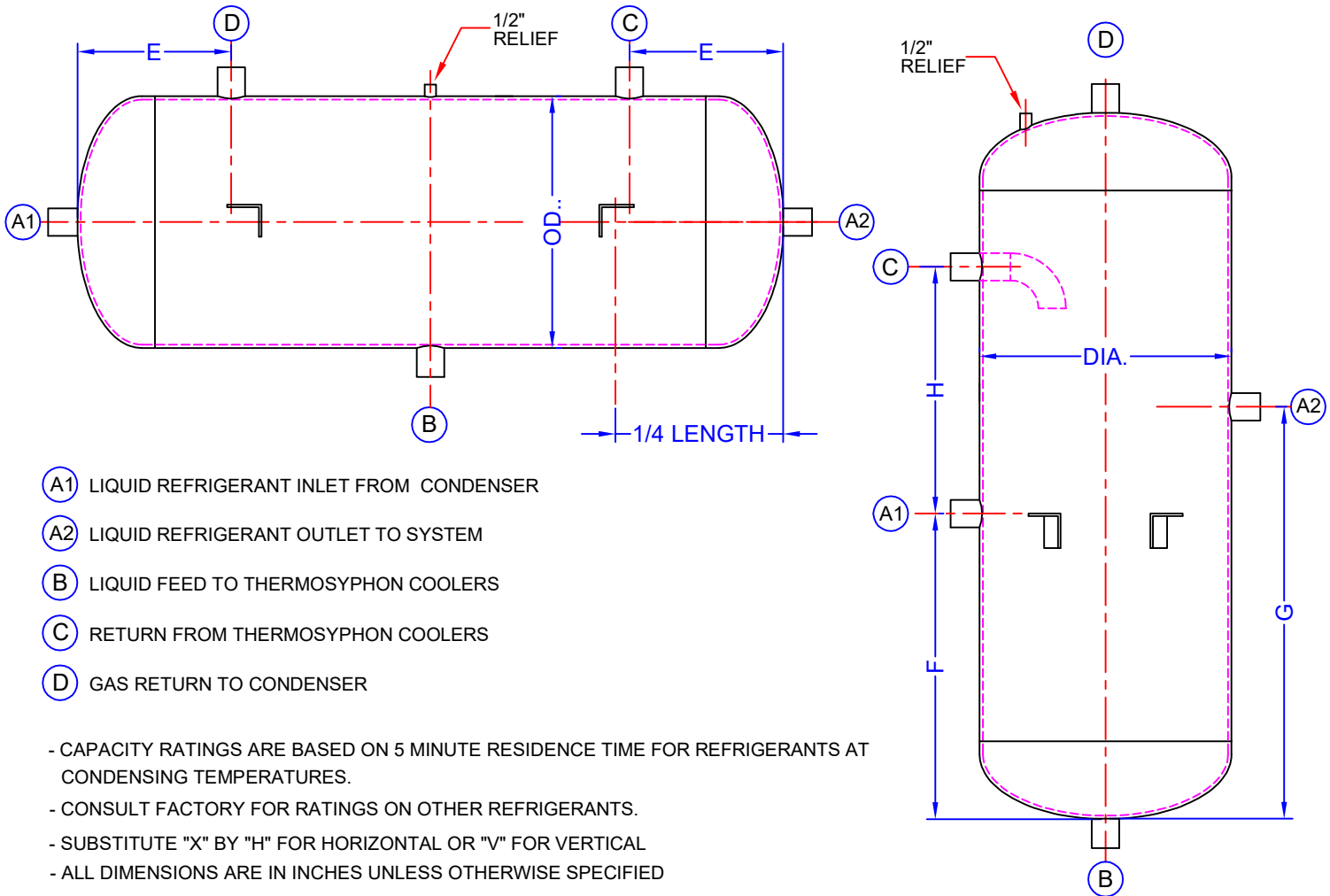


**DELTA TEE INTERNATIONAL, INC.**

1000 COMMERCIAL BLVD SOUTH #100, ARLINGTON, TX 76001

TEL: (817) 466-9991 FAX: (817) 466-9979

# THERMOSYPHON RECEIVER



- (A1) LIQUID REFRIGERANT INLET FROM CONDENSER
- (A2) LIQUID REFRIGERANT OUTLET TO SYSTEM
- (B) LIQUID FEED TO THERMOSYPHON COOLERS
- (C) RETURN FROM THERMOSYPHON COOLERS
- (D) GAS RETURN TO CONDENSER

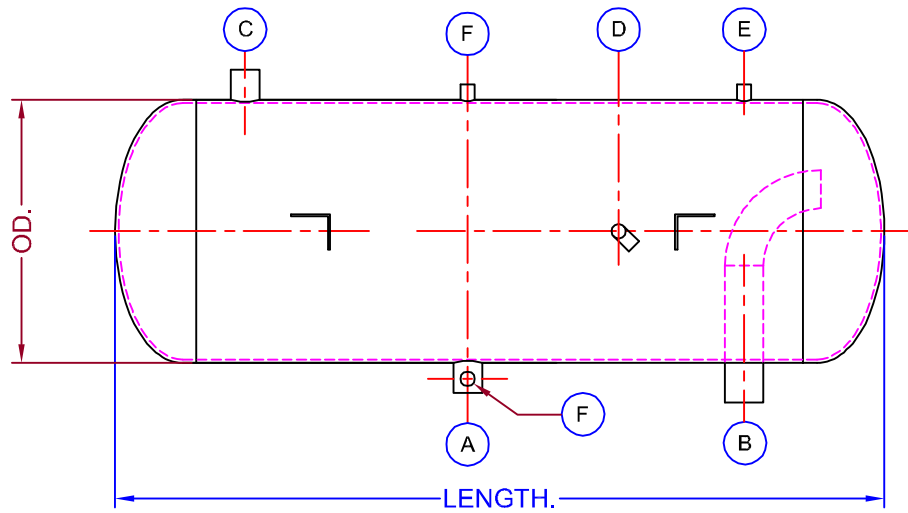
- CAPACITY RATINGS ARE BASED ON 5 MINUTE RESIDENCE TIME FOR REFRIGERANTS AT CONDENSING TEMPERATURES.
- CONSULT FACTORY FOR RATINGS ON OTHER REFRIGERANTS.
- SUBSTITUTE "X" BY "H" FOR HORIZONTAL OR "V" FOR VERTICAL
- ALL DIMENSIONS ARE IN INCHES UNLESS OTHERWISE SPECIFIED

MODEL	AMMONIA CAPACITY (kbtu/hr)	DIAMETER (DIA.)	LENGTH	A *	B*	C*	D*	E	F	G	H
TSV0804X	143	8 5/8	48	1 1/4	1 1/2	2	1 1/4	7	32	35	9
TSV1004X	228	10 3/4	48	1 1/2	1 1/2	2	1 1/2	8	31	34	9
TSV1205X	405	12 3/4	60	2	2	2 1/2	2	9	41	45	10
TSV1406X	575	14	72	2 1/2	2 1/2	3	2 1/2	9	50	55	13
TSV1606X	765	16	72	3	3	4	3	10	48	53	14
TSV1806X	960	18	72	3	3	4	3	11	47	52	14
TSV2006X	1200	20	72	4	4	5	4	12	45	51	15
TSV2407X	1900	24	78	5	4	5	4	14	44	52	20
TSV3007X	2970	30	78	6	5	6	5	15	42	51	21
TSV3607X	4670	36	84	8	6	8	6	20	41	52	23

Data provided for informational purposes and should not be used in actual design. Please consult factory for specific detailed engineered information.



## HORIZONTAL SURGE DRUM SINGLE FLOW



### HORIZONTAL SURGE DRUM SINGLE FLOW CAPACITIES T.R. R-717 (1)

MODEL NO.	SINGLE STAGE (2)						2-STAGE (2)				R-717 CHARGE Lb (3)	SURGE VOLUME CU. FT
	OPERATING TEMPERATURE						OPERATING TEMPERATURE					
	30°F	20°F	10°F	0°F	-10°F	-20°F	-20°F	-30°F	-40°F	-50°F		
DSDS-1660-H	31	28	25	22	20	18	21	18	16	14	45	1.9
DSDS-2072-H	49	44	40	40	32	28	33	29	25	22	61	4.3
DSDS-2472-H	72	65	58	52	46	41	48	42	37	32	66	6.7
DSDS-3096-H	114	103	92	83	73	65	76	67	58	50	99	15.2
DSDS-3696-H	165	149	134	120	107	94	111	97	85	73	107	22.8
DSDS-42121-H	226	204	184	164	146	129	151	133	116	100	147	40.4
DSDS-48124-H	296	268	241	216	192	169	199	174	152	131	159	54.9
DSDS-54127-H	373	337	303	271	241	213	250	219	191	165	161	71.2
DSDS-60130-H	458	414	373	333	296	262	307	270	235	203	170	89.9

1. CAPACITY RATINGS AND SURGE VOLUME ARE BASED ON MAXIMUM LIQUID LEVEL AT HALF WAY THE DIAMETER OF THE VESSEL.
2. SINGLE STAGE BASED ON 95°F LIQUID MAKE UP. TWO-STAGE BASED ON 25°F LIQUID MAKE UP
3. OPERATING CHARGE IS BASED ON AMMONIA AT 0°F

### SURGE DRUM SINGLE FLOW DIMENSIONS AND NOZZLES

MODEL NO.	DIA	OVERALL LENGTH	A	B	C	D	E	F
			LIQUID OUTLET	WET RETURN	VAPOR OUTLET	LIQUID MAKE UP	LEVEL COLUMN	RELIEF
DSDS-1660-H	16	60	1-1/2	3	2-1/2	1	1-1/2	1
DSDS-2072-H	20	72	2	4	3	1-1/2	1-1/2	1
DSDS-2472-H	24	72	2	4	4	1-1/2	1-1/2	1
DSDS-3096-H	30	96	3	5	4	1-1/2	1-1/2	1
DSDS-3696-H	36	96	3	6	5	2	1-1/2	1
DSDS-42121-H	42	121	4	6	5	2	1-1/2	1
DSDS-48124-H	48	124	4	8	6	2-1/2	1-1/2	1
DSDS-54127-H	54	127	5	8	8	3	1-1/2	1
DSDS-60130-H	60	130	5	10	8	3	1-1/2	1

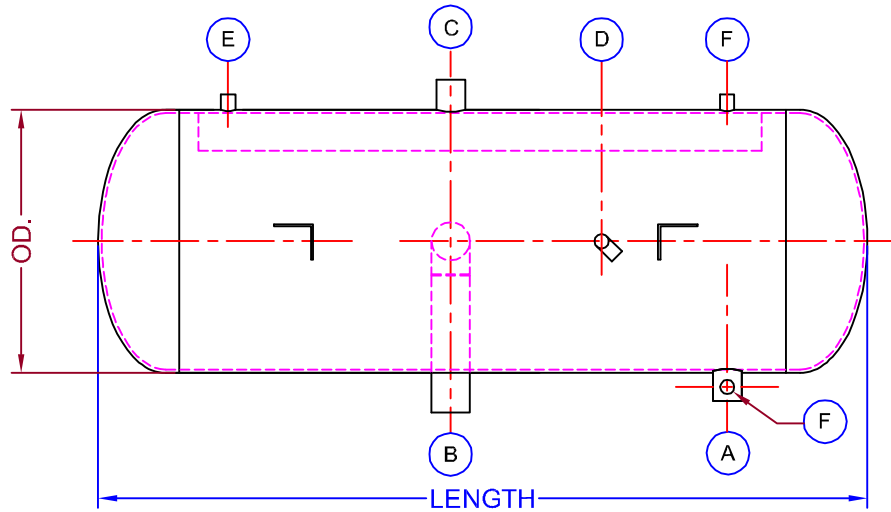
1. ALL DIMENSIONS ARE IN INCHES

Data provided for informational purposes and should not be used in actual design. Please consult factory for specific detailed engineered information.





## HORIZONTAL SURGE DRUM DUAL FLOW



### HORIZONTAL SURGE DRUM DUAL FLOW CAPACITIES T.R. R-717 (1)

MODEL NO.	SINGLE STAGE (1)						2-STAGE (2)				R-717 CHARGE lb (3)	SURGE VOLUME CU. FT
	OPERATING TEMPERATURE						OPERATING TEMPERATURE					
	30°F	20°F	10°F	0°F	-10°F	-20°F	-20°F	-30°F	-40°F	-50°F		
DSDD-1684-H	62	56	50	45	40	35	41	36	42	27	45	1.9
DSDD-2096-H	98	89	80	72	64	56	66	58	50	44	61	4.3
DSDD-2496-H	144	130	117	104	93	82	96	84	74	64	66	6.7
DSDD-3096-H	227	205	185	165	147	130	152	134	117	101	99	15.2
DSDD-36108-H	330	298	268	240	213	188	221	194	169	146	107	22.8
DSDD-42121-H	452	409	367	329	292	258	303	266	232	200	147	40.4
DSDD-48124-H	593	536	482	431	383	338	397	349	304	263	159	54.9
DSDD-54127-H	746	674	607	542	482	426	500	439	383	331	161	71.2
DSDD-60130-H	917	829	745	666	592	523	614	539	470	406	161	89.9

1. CAPACITY RATINGS AND SURGE VOLUME ARE BASED ON MAXIMUM LIQUID LEVEL AT HALF WAY THE DIAMETER OF THE VESSEL.
2. SINGLE STAGE BASED ON 95°F LIQUID MAKE UP. TWO-STAGE BASED ON 25°F LIQUID MAKE UP
3. OPERATING CHARGE IS BASED ON AMMONIA AT 0°F

### SURGE DRUM DUAL FLOW DIMENSIONS AND NOZZLES

MODEL NO.	DIA	OVERALL LENGTH	A	B	C	D	E	F
			LIQUID OUTLET	WET RETURN	VAPOR OUTLET	LIQUID MAKE UP	LEVEL COLUMN	RELIEF
DSDD-1684-H	16	84	2	4	3	1-1/2	1-1/2	1
DSDD-2096-H	20	96	3	5	4	2	1-1/2	1
DSDD-2496-H	24	96	3	5	5	2	1-1/2	1
DSDD-3096-H	30	96	4	6	5	2-1/2	1-1/2	1
DSDD-36108-H	36	108	4	8	6	2-1/2	1-1/2	1
DSDD-42121-H	42	121	5	8	8	3	1-1/2	1
DSDD-48124-H	48	124	5	10	8	3	1-1/2	1
DSDD-54127-H	54	127	6	10	8	4	1-1/2	1
DSDD-60130-H	60	130	6	10	10	4	1-1/2	1

1. ALL DIMENSIONS ARE IN INCHES

Data provided for informational purposes and should not be used in actual design.  
 Please consult factory for specific detailed engineered information.

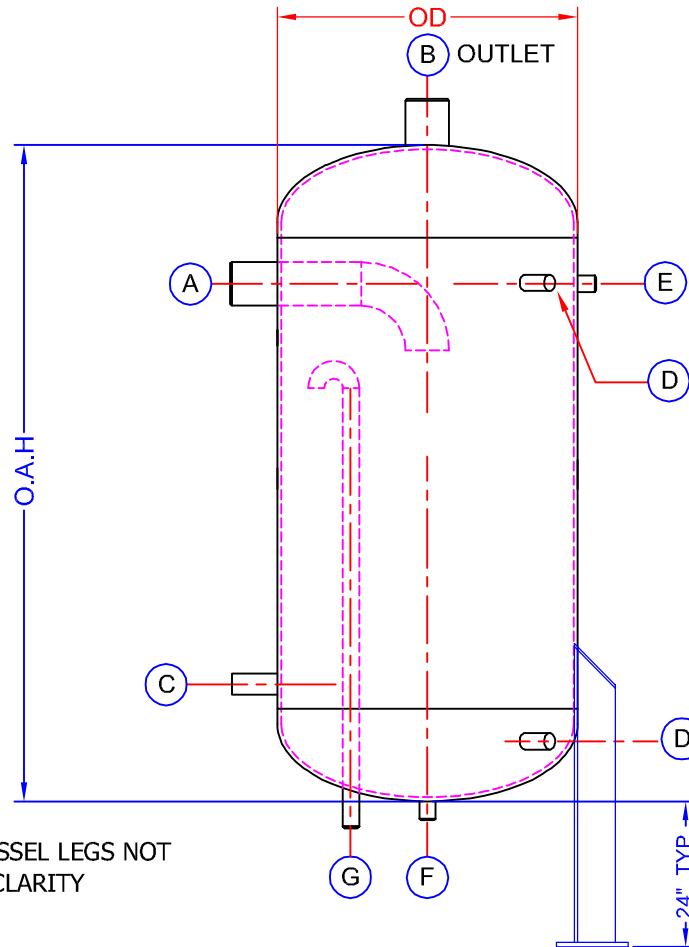


# DELTA TEE INTERNATIONAL, INC.

1000 COMMERCIAL BLVD SOUTH #100, ARLINGTON, TX 76001

TEL: (817) 466-9991 FAX: (817) 466-9979

## VERTICAL ACCUMULATOR



### VERTICAL ACCUMULATOR CAPACITIES T.R. R-717

MODEL NO.	SINGLE STAGE (1)						2-STAGE (2)			
	OPERATING TEMPERATURE						OPERATING TEMPERATURE			
	30°F	20°F	10°F	0°F	-10°F	-20°F	-20°F	-30°F	-40°F	-50°F
DACV-1284-V	34	30	27	24	22	19	23	58	17	15
DACV-1684-V	62	56	50	45	40	35	41	36	32	27
DACV-2096-V	98	89	80	72	64	56	66	58	50	44
DACV-24100-V	144	130	117	104	93	82	96	84	74	64
DACV30115-V	227	205	185	165	147	130	152	134	117	101
DACV-36118-V	330	298	268	240	213	188	221	194	169	146
DACV-42121-V	452	408	367	329	292	258	303	266	232	200
DACV-48148-V	593	536	482	431	383	338	397	349	304	263
DACV-54151-V	746	674	606	542	482	426	500	439	383	331
DACV-60154-V	917	829	745	666	592	523	614	532	470	406
DACV-72160-V	1330	1202	1081	967	859	759	891	773	682	589
DACV-84166-V	1808	1634	1470	1314	1168	1031	106	1063	927	802
DACV-96172-V	2373	2144	1928	1724	1533	1353	1589	1395	1216	1052
DACV-108178-V	2999	2710	2437	2180	1938	1711	2008	1764	1537	1329
DACV-120184-V	3699	3342	3006	2689	2390	2110	2477	2175	1896	1640
DACV-144196-V	5338	4823	4338	3880	3449	3149	3575	3139	2736	2366

1. SINGLE STAGE CAPACITY BASED ON 95°F LIQUID MAKE UP. TWO STAGE CAPACITIES BASED ON 25°F LIQUID MAKE UP
2. SEE SHEET 2 FOR SCHEDULE CONNECTIONS

Data provided for informational purposes and should not be used in actual design. Please consult factory for specific detailed engineered information.



# DELTA TEE INTERNATIONAL, INC.

1000 COMMERCIAL BLVD SOUTH #100, ARLINGTON, TX 76001

TEL: (817) 466-9991 FAX: (817) 466-9979

## VERTICAL ACCUMULATOR CONNECTIONS

MODEL NO.	DIA	OVERALL LENGTH	A	B	C	D	E	F	G
			SUCTION INLET	SUCTION OUTLET	LIQUID OUTLET	LEVEL COLUMN	RELIEF	DRAIN	EQUAL
DACV-1684-V	16	84	3	3	3	1-1/2	1	2	3/4
DACV-2096-V	20	96	4	4	3	1-1/2	1	2	3/4
DACV-24112-V	24	112	5	5	3	1-1/2	1	2	3/4
DACV30115-V	30	115	6	6	4	1-1/2	1	2	3/4
DACV-36118-V	36	118	6	6	4	1-1/2	1	2	3/4
DACV-42121-V	42	121	8	8	4	1-1/2	1	2	3/4
DACV-48148-V	48	148	8	8	4	1-1/2	1	2	3/4
DACV-54151-V	54	151	10	10	4	1-1/2	1-1/2	2	3/4
DACV-60154-V	60	154	10	10	4	1-1/2	1-1/2	2	3/4
DACV-72160-V	72	160	12	12	5	1-1/2	1-1/2	2	3/4
DACV-84166-V	84	166	12	12	5	1-1/2	1-1/2	2	3/4
DACV-96172-V	96	172	14	14	6	1-1/2	1-1/2	2	3/4
DACV-108178-V	108	178	16	16	6	1-1/2	1-1/2	2	3/4
DACV-120184-V	120	184	16	16	6	1-1/2	1-1/2	2	3/4
DACV-144196-V	144	196	20	20	6	1-1/2	1-1/2	2	3/4

1. ALL DIMENSIONS ARE IN INCHES

Data provided for informational purposes and should not be used in actual design.  
Please consult factory for specific detailed engineered information.

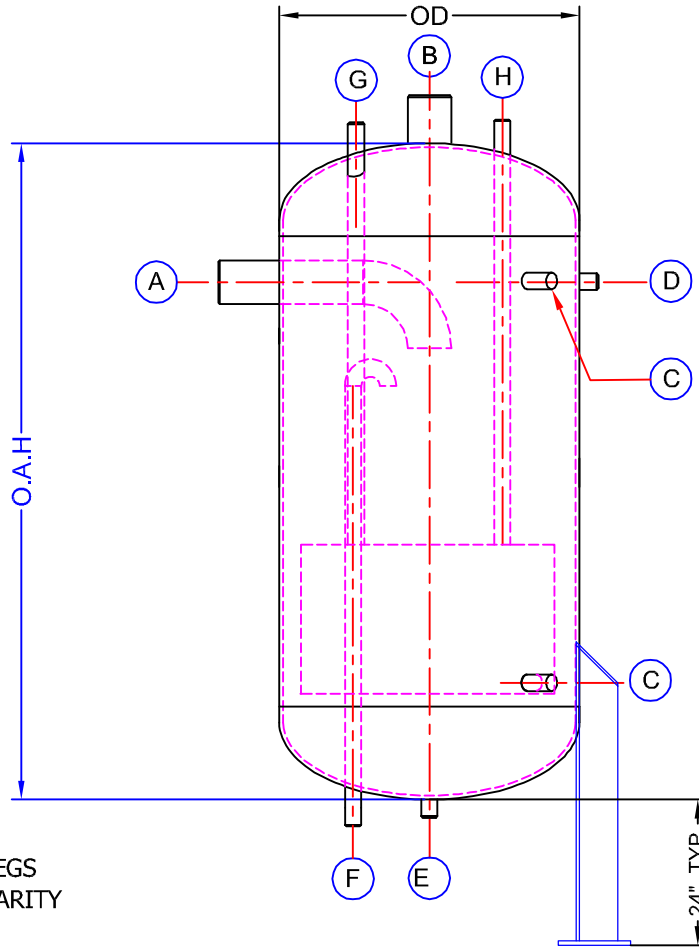


# DELTA TEE INTERNATIONAL, INC.

1000 COMMERCIAL BLVD SOUTH #100, ARLINGTON, TX 76001

TEL: (817) 466-9991 FAX: (817) 466-9979

## VERTICAL ACCUMULATOR WITH COIL



NOTE: ALL VESSEL LEGS  
NOT SHOWN FOR CLARITY

### VERTICAL ACCUMULATOR WITH COIL CAPACITIES T.R. R-717

MODEL NO.	SINGLE STAGE (1)						2-STAGE (2)			
	OPERATING TEMPERATURE						OPERATING TEMPERATURE			
	30°F	20°F	10°F	0°F	-10°F	-20°F	-20°F	-30°F	-40°F	-50°F
DACC-1684-V	62	56	50	45	40	35	41	36	32	27
DACC-2096-V	98	89	80	72	64	56	66	58	50	44
DACC-24100-V	144	130	117	104	93	82	96	84	74	64
DACC30115-V	227	205	185	165	147	130	152	134	117	101
DACC-36118-V	330	298	268	240	213	188	221	194	169	146
DACC-42121-V	452	408	367	329	292	258	303	266	232	200
DACC-48148-V	593	536	482	431	383	338	397	349	304	263
DACC-54151-V	746	674	606	542	482	426	500	439	383	331
DACC-60154-V	917	829	745	666	592	523	614	532	470	406
DACC-72160-V	1330	1202	1081	967	859	759	891	773	682	589
DACC-84166-V	1808	1634	1470	1314	1168	1031	106	1063	927	802
DACC-96172-V	2373	2144	1928	1724	1533	1353	1589	1395	1216	1052
DACC-108178-V	2999	2710	2437	2180	1938	1711	2008	1764	1537	1329
DACC-120184-V	3699	3342	3006	2689	2390	2110	2477	2175	1896	1640
DACC-144196-V	5338	4823	4338	3880	3449	3149	3575	3139	2736	2366

1. CAPACITIES BASED ON 95°F LIQUID MAKE UP. TWO-STAGE CAPACITIES BASED ON 25°F LIQUID MAKE UP
2. SEE SHEET 2 FOR SCHEDULE CONNECTIONS

Data provided for informational purposes and should not be used in actual design.  
Please consult factory for specific detailed engineered information.



# DELTA TEE INTERNATIONAL, INC.

1000 COMMERCIAL BLVD SOUTH #100, ARLINGTON, TX 76001

TEL: (817) 466-9991 FAX: (817) 466-9979

## VERTICAL ACCUMULATOR WITH COIL CONNECTIONS

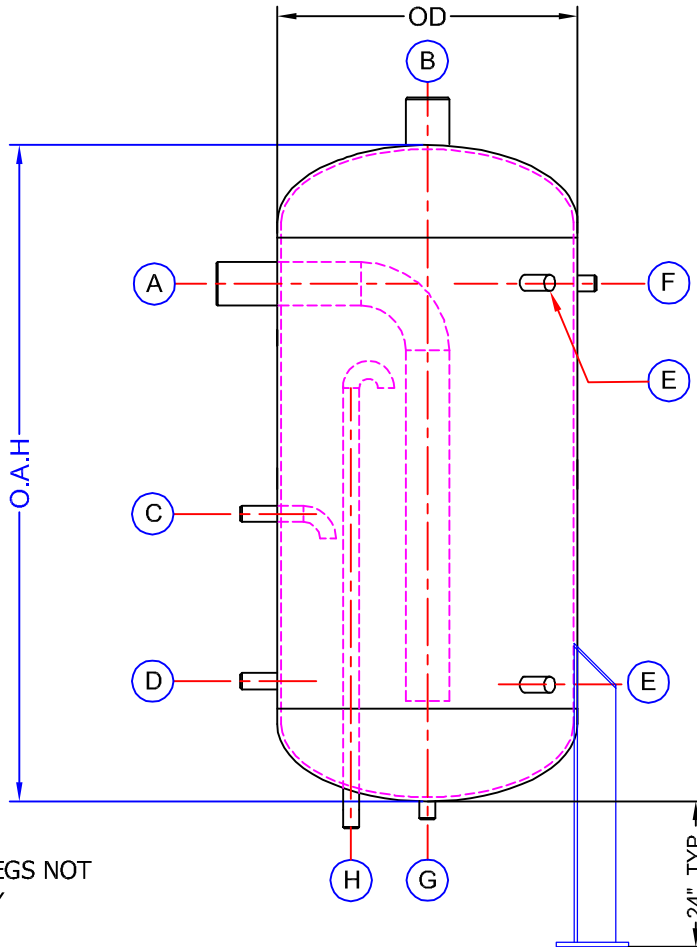
MODEL NO.	DIA	OVERALL LENGTH	A	B	C	D	E	F	G	H
			SUCTION INLET	SUCTION OUTLET	LEVEL COLUMN	RELIEF	DRAIN	EQUAL	COIL INLET	COIL OUTLET
DACC-1684-V	16	84	3	3	1-1/2	1	2	3/4	3/4	3/4
DACC-2096-V	20	96	4	4	1-1/2	1	2	3/4	1	1
DACC-24112-V	24	112	5	5	1-1/2	1	2	3/4	1-1/4	1-1/4
DACC30115-V	30	115	6	6	1-1/2	1	2	3/4	1-1/4	1-1/4
DACC-36118-V	36	118	6	6	1-1/2	1	2	3/4	1-1/2	1-1/2
DACC-42121-V	42	121	8	8	1-1/2	1	2	3/4	2-1/2	2-1/2
DACC-48148-V	48	148	8	8	1-1/2	1	2	3/4	3	3
DACC-54151-V	54	151	10	10	1-1/2	1-1/2	2	3/4	3	3
DACC-60154-V	60	154	10	10	1-1/2	1-1/2	2	3/4	3	3
DACC-72160-V	72	160	12	12	1-1/2	1-1/2	2	3/4	4	4
DACC-84166-V	84	166	12	12	1-1/2	1-1/2	2	3/4	4	4
DACC-96172-V	96	172	14	14	1-1/2	1-1/2	2	3/4	4	4
DACC-108178-V	108	178	16	16	1-1/2	1-1/2	2	3/4	5	5
DACC-120184-V	120	184	16	16	1-1/2	1-1/2	2	3/4	5	5
DACC-144196-V	144	196	20	20	1-1/2	1-1/2	2	3/4	6	6

1- ALL DIMENSIONS ARE IN INCHES

Data provided for informational purposes and should not be used in actual design.  
Please consult factory for specific detailed engineered information.



## VERTICAL INTERCOOLER



**NOTE:** ALL VESSEL LEGS NOT SHOWN FOR CLARITY

### VERTICAL INTERCOOLER CAPACITIES T.R. R-717

MODEL NO.	INTERSTAGE SAT'D TEMPERATURE				
	40°F	30°F	20°F	10°F	0°F
DICV-1696-V	62	56	50	45	40
DICV-20108-V	98	89	80	72	64
DICV-24112-V	144	130	117	104	93
DICV30115-V	227	205	185	165	147
DICV-36118-V	330	298	268	240	213
DICV-42145-V	452	408	367	329	292
DICV-48148-V	593	536	482	431	383
DICV-54151-V	746	674	606	542	482
DICV-60154-V	917	829	745	666	592
DICV-72160-V	1330	1202	1081	967	859
DICV-84166-V	1808	1634	1470	1314	1168
DICV-96172-V	2373	2144	1928	1724	1533
DICV-108178-V	2999	2710	2437	2180	1938
DICV-120184-V	3699	3342	3006	2689	2390
DICV-144196-V	5338	4823	4338	3880	3449

1. CAPACITIES BASED ON 95°F LIQUID MAKE UP.
2. CAPACITIES ARE TR LOADS GOING INTO HIGH STAGE COMPRESSOR
3. SEE SHEET 2 FOR SCHEDULE CONNECTIONS

Data provided for informational purposes and should not be used in actual design. Please consult factory for specific detailed engineered information.



# DELTA TEE INTERNATIONAL, INC.

1000 COMMERCIAL BLVD SOUTH #100, ARLINGTON, TX 76001

TEL: (817) 466-9991 FAX: (817) 466-9979

## VERTICAL INTERCOOLER

MODEL NO.	DIA	OVERALL LENGTH	A	B	C	D	E	F	G	H
			BOOSTER INLET	SUCTION OUTLET	LIQUID MKE-UP	LIQUID OUTLET	LEVEL COLUMN	RELIEF	DRAIN	EQUAL
DICV-1696-V	16	84	3	3	1-1/2	1-1/2	1-1/2	1	2	3/4
DICV-20108-V	20	96	4	4	1-1/2	1-1/2	1-1/2	1	2	3/4
DICV-24112-V	24	112	4	4	1-1/2	1-1/2	1-1/2	1	2	3/4
DICV30115-V	30	115	5	5	2	2	1-1/2	1	2	3/4
DICV-36118-V	36	118	6	6	2	2	1-1/2	1	2	3/4
DICV-42145-V	42	121	6	6	2-1/2	2-1/2	1-1/2	1	2	3/4
DICV-48148-V	48	148	8	8	2-1/2	2-1/2	1-1/2	1	2	3/4
DICV-54151-V	54	151	8	8	3	3	1-1/2	1-1/2	2	3/4
DICV-60154-V	60	154	8	8	3	3	1-1/2	1-1/2	2	3/4
DICV-72160-V	72	160	10	10	3	3	1-1/2	1-1/2	2	3/4
DICV-84166-V	84	166	10	10	4	4	1-1/2	1-1/2	2	3/4
DICV-96172-V	96	172	12	12	4	4	1-1/2	1-1/2	2	3/4
DICV-108178-V	108	178	12	12	4	4	1-1/2	1-1/2	2	3/4
DICV-120184-V	120	184	14	14	5	5	1-1/2	1-1/2	2	3/4
DICV-144196-V	144	196	16	16	5	5	1-1/2	1-1/2	2	3/4

1. ALL DIMENSION ARE IN INCHES

Data provided for informational purposes and should not be used in actual design.  
Please consult factory for specific detailed engineered information.

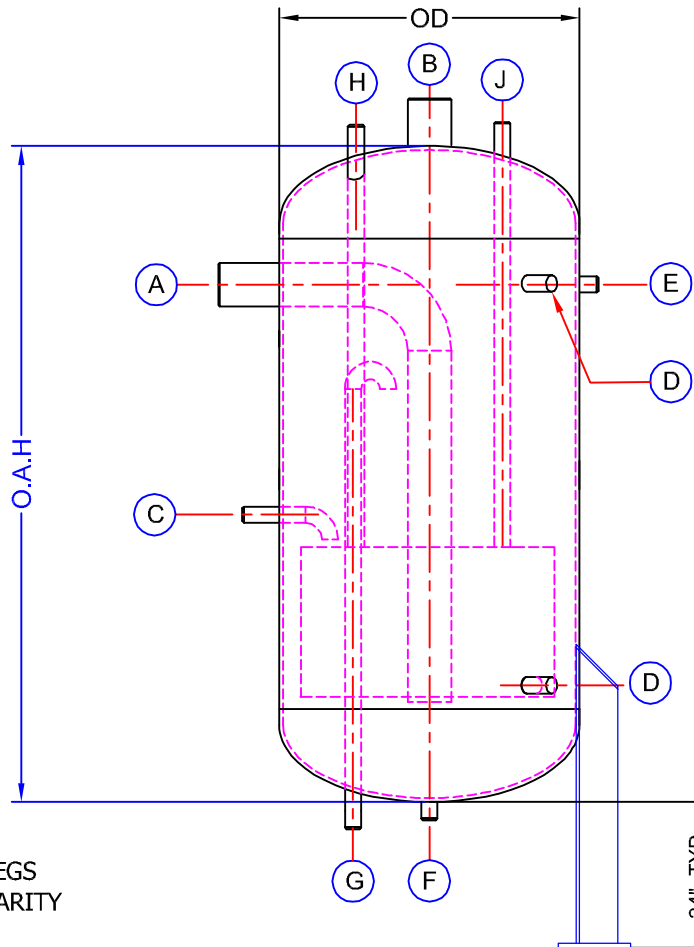


**DELTA TEE INTERNATIONAL, INC.**

1000 COMMERCIAL BLVD SOUTH #100, ARLINGTON, TX 76001

TEL: (817) 466-9991 FAX: (817) 466-9979

## VERTICAL INTERCOOLER WITH COIL



NOTE: ALL VESSEL LEGS  
NOT SHOWN FOR CLARITY

### VERTICAL INTERCOOLER WITH COIL CAPACITIES T.R. R-717

MODEL NO.	INTERSTAGE SAT'D TEMPERATURE				
	40°F	30°F	20°F	10°F	0°F
DICV-1696-V	62	56	50	45	40
DICV-20108-V	98	89	80	72	64
DICV-24112-V	144	130	117	104	93
DICV30115-V	227	205	185	165	147
DICV-36118-V	330	298	268	240	213
DICV-42145-V	452	408	367	329	292
DICV-48148-V	593	536	482	431	383
DICV-54151-V	746	674	606	542	482
DICV-60154-V	917	829	745	666	592
DICV-72160-V	1330	1202	1081	967	859
DICV-84166-V	1808	1634	1470	1314	1168
DICV-96172-V	2373	2144	1928	1724	1533
DICV-108178-V	2999	2710	2437	2180	1938
DICV-120184-V	3699	3342	3006	2689	2390
DICV-144196-V	5338	4823	4338	3880	3449

1. CAPACITIES BASED ON 95°F LIQUID MAKE UP.
2. CAPACITIES ARE TR LOADS GOING INTO HIGH STAGE COMPRESSOR
3. SEE SHEET 2 FOR SCHEDULE CONNECTIONS

Data provided for informational purposes and should not be used in actual design.  
Please consult factory for specific detailed engineered information.





# DELTA TEE INTERNATIONAL, INC.

1000 COMMERCIAL BLVD SOUTH #100, ARLINGTON, TX 76001

TEL: (817) 466-9991 FAX: (817) 466-9979

## VERTICAL INTERCOOLER WITH COIL

MODEL NO.	DIA	OVERALL LENGTH	A	B	C	D	E	F	G	H	J
			BOOSTER INLET	SUCTION OUTLET	LIQUID MKE-UP	LEVEL COLUMN	RELIEF	DRAIN	EQUAL	COIL INLET	COIL OUTLET
DICC-1696-V	16	84	3	3	1-1/2	1-1/2	1	2	3/4	3/4	3/4
DICC-20108-V	20	96	4	4	1-1/2	1-1/2	1	2	3/4	3/4	3/4
DICC-24112-V	24	112	4	4	1-1/2	1-1/2	1	2	3/4	1	1
DICC30115-V	30	115	5	5	2	1-1/2	1	2	3/4	1-1/4	1-1/4
DICC-36118-V	36	118	6	6	2	1-1/2	1	2	3/4	1-1/2	1-1/2
DICC-42145-V	42	121	6	6	2-1/2	1-1/2	1	2	3/4	1-1/2	1-1/2
DICC-48148-V	48	148	8	8	2-1/2	1-1/2	1	2	3/4	1-1/2	1-1/2
DICC-54151-V	54	151	8	8	3	1-1/2	1-1/2	2	3/4	2	2
DICC-60154-V	60	154	8	8	3	1-1/2	1-1/2	2	3/4	2	2
DICC-72160-V	72	160	10	10	3	1-1/2	1-1/2	2	3/4	3	3
DICC-84166-V	84	166	10	10	4	1-1/2	1-1/2	2	3/4	3	3
DICC-96172-V	96	172	12	12	4	1-1/2	1-1/2	2	3/4	4	4
DICC-108178-V	108	178	12	12	4	1-1/2	1-1/2	2	3/4	4	4
DICC-120184-V	120	184	14	14	5	1-1/2	1-1/2	2	3/4	5	5
DICC-144196-V	144	196	16	16	5	1-1/2	1-1/2	2	3/4	6	6

1. ALL DIMENSIONS ARE IN INCHES

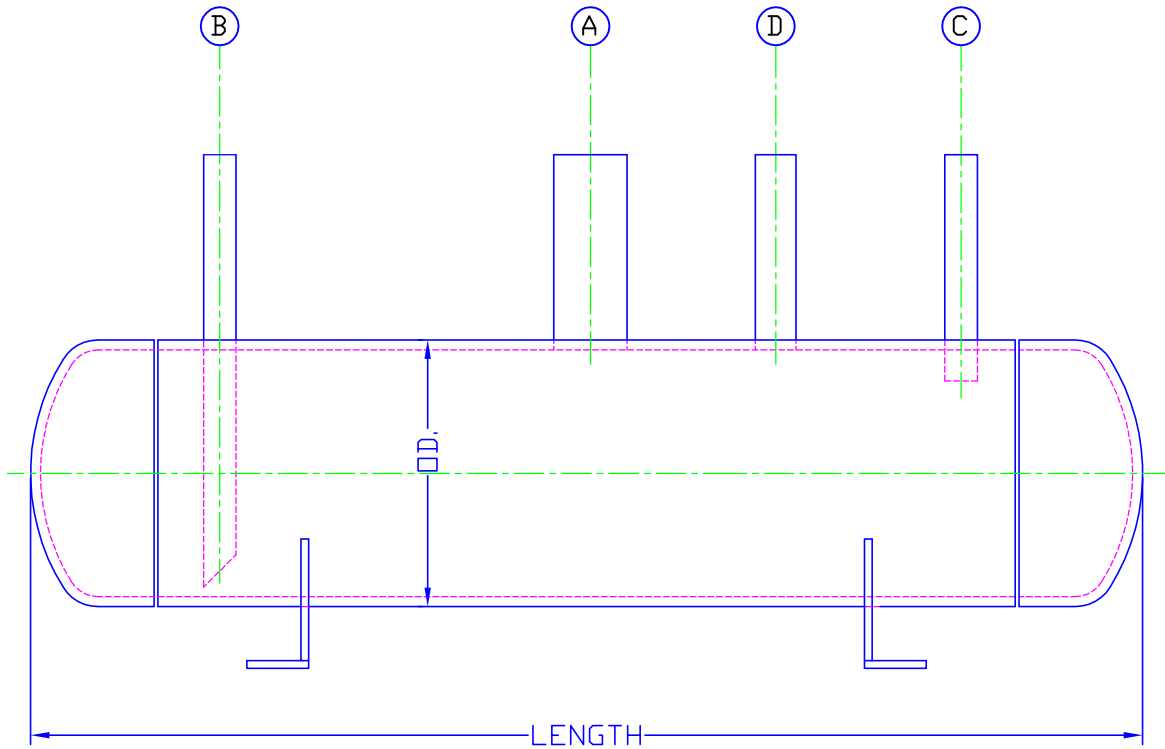
Data provided for informational purposes and should not be used in actual design.  
Please consult factory for specific detailed engineered information.



# DELTA TEE INTERNATIONAL, INC.

1000 COMMERCIAL BLVD SOUTH #100, ARLINGTON, TX 76001  
 TEL: (817) 466-9991 FAX: (817) 466-9979

## OIL POT



MODEL NO.	DIA	OVERALL LENGTH	A	B	C	D
			LIQUID INLET	LIQUID OUTLET	EQUAL	RELIEF
DROP-0836-H	8	36	2	3/4	3/4	1
DROP-1036-H	10	36	2	3/4	3/4	1
DROP-1236-H	12	36	2	3/4	3/4	1

1. ALL DIMENSIONS ARE IN INCHES

Data provided for informational purposes and should not be used in actual design.  
 Please consult factory for specific detailed engineered information.



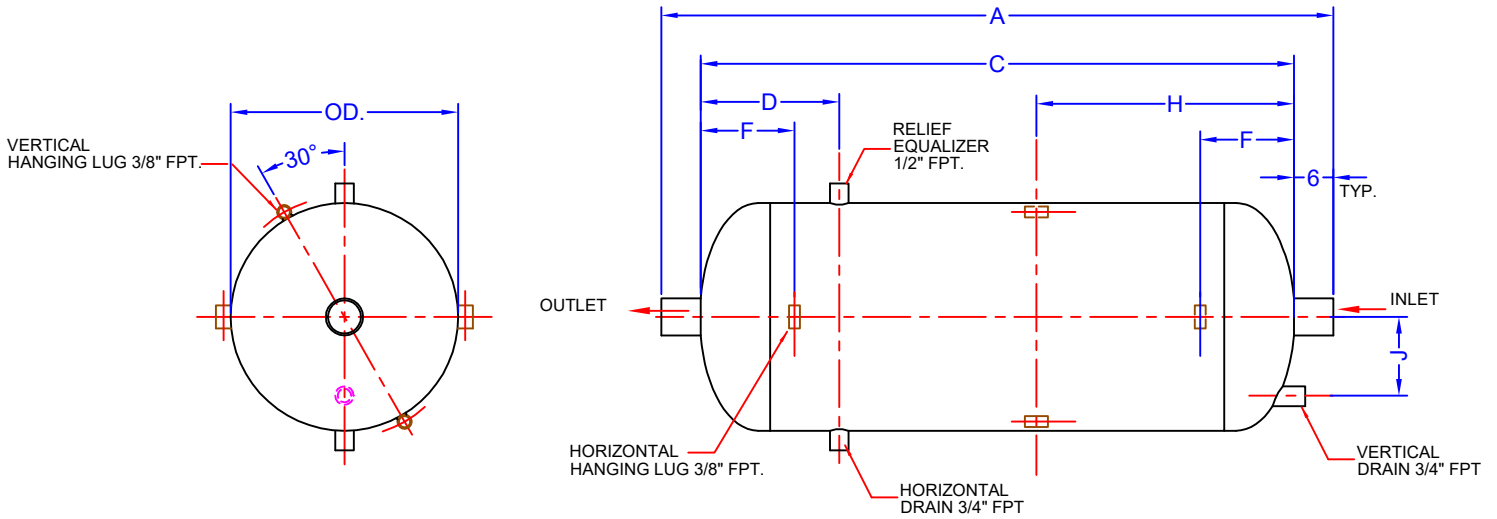
**DELTA TEE INTERNATIONAL, INC.**

1000 COMMERCIAL BLVD SOUTH #100, ARLINGTON, TX 76001

TEL: (817) 466-9991 FAX: (817) 466-9979

# COALESCING OIL SEPARATOR UP TO 250 DCFM

(WITH NON-REPLACEABLE ELEMENTS)



MODEL NUMBER	DIMENSIONS (INCHES)								IN/OUT		WEIGHT (LBS)
	RATING (DCFm)	DIA.	A	C	D	H	F	J	WELD STUB	ODS	
COS-08-33	33	8 5/8	36	24	5	12	4	3	2	2 1/8	80
COS-10-63	63	10 3/4	44	32	7	16	5	3	2 1/2	2 5/8	240
COS-14-85	85	14	53	41	8	20	6	4	2 1/2	2 5/8	300
COS- 16-145	145	16	54	42	9	21	8	5	3	3 1/8	335
COS- 18-210	210	18	64	52	9	24	8	5	4	4 1/8	465
COS- 20-250	250	20	65	53	10	25	9	6	5	-	536

FLOW RATE MULTIPLIER FOR REFRIGERANTS:

R-717	1
R-22	0.746
R-290	0.85
R-134a	0.765
R-404a	0.703
R-410a	0.694
R-507a	0.682

- CAPACITY RATINGS ARE BASED ON AMMONIA.

- ALL DIMENSIONS ARE IN INCHES UNLESS OTHERWISE SPECIFIED.

Data provided for informational purposes and should not be used in actual design. Please consult factory for specific detailed engineered information.



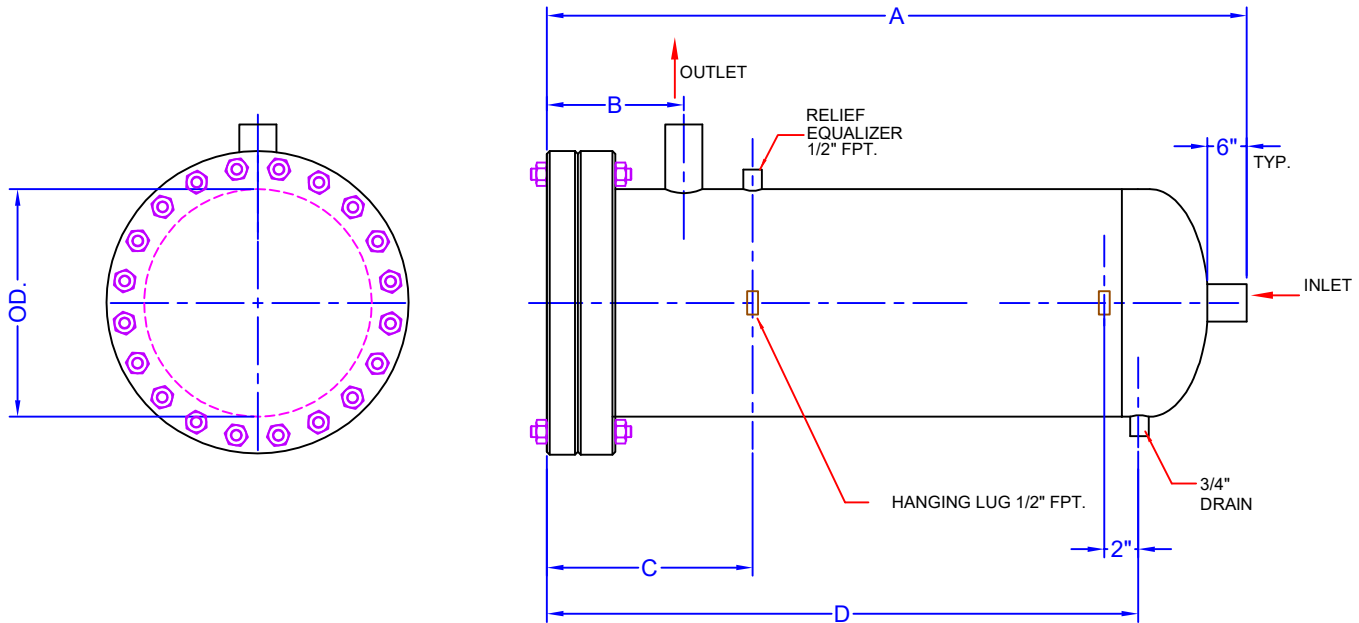
# DELTA TEE INTERNATIONAL, INC.

1000 COMMERCIAL BLVD SOUTH #100, ARLINGTON, TX 76001

TEL: (817) 466-9991 FAX: (817) 466-9979

## COALESCING OIL SEPARATOR UP TO 250 DCFM

(WITH REPLACEABLE ELEMENTS)



MODEL NUMBER	DIMENSIONS (INCHES)						IN/OUT		WEIGHT (LBS)
	RATING (DCFm)	DIA.	A	B	C	D	WELD STUB	ODS	
COS-08-33	33	8 5/8	36 1/2	6	9 1/2	28 1/4	2	2 1/8	140
COS-10-63	63	10 3/4	45 1/4	7	11	35 3/4	2 1/2	2 5/8	310
COS-14-85	85	14	51	8	12	38	2 1/2	2 5/8	460
COS-16-145	145	16	52 1/2	8 1/2	13	41 3/4	3	3 1/8	570
COS-18-210	210	18	65 1/2	10	15 1/2	54 1/4	4	4 1/8	775
COS-20-250	250	20	67 1/4	11	17 1/2	55 1/4	5	-	895

FLOW RATE MULTIPLIER FOR REFRIGERANTS:

R-717	1
R-22	0.746
R-290	0.85
R-134a	0.765
R-404a	0.703
R-410a	0.694
R-507a	0.682

- CAPACITY RATINGS ARE BASED ON AMMONIA.

- ALL DIMENSIONS ARE IN INCHES UNLESS OTHERWISE SPECIFIED.

Data provided for informational purposes and should not be used in actual design. Please consult factory for specific detailed engineered information.

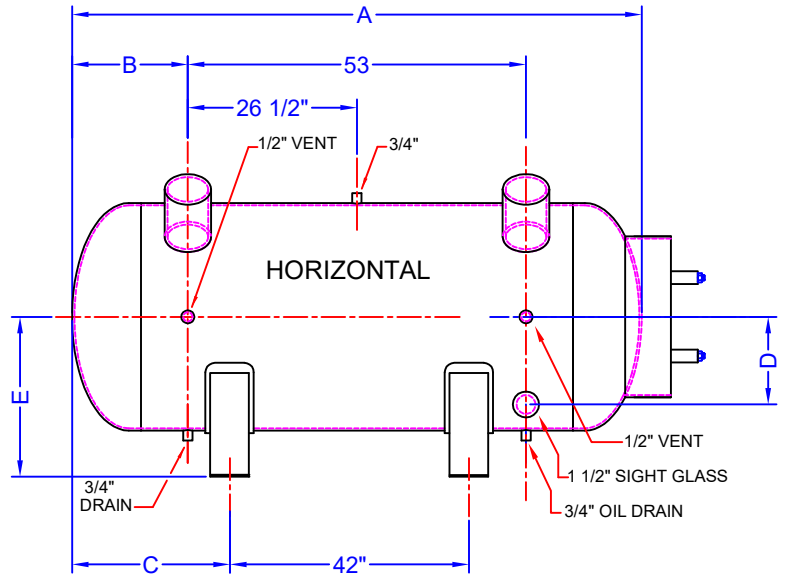
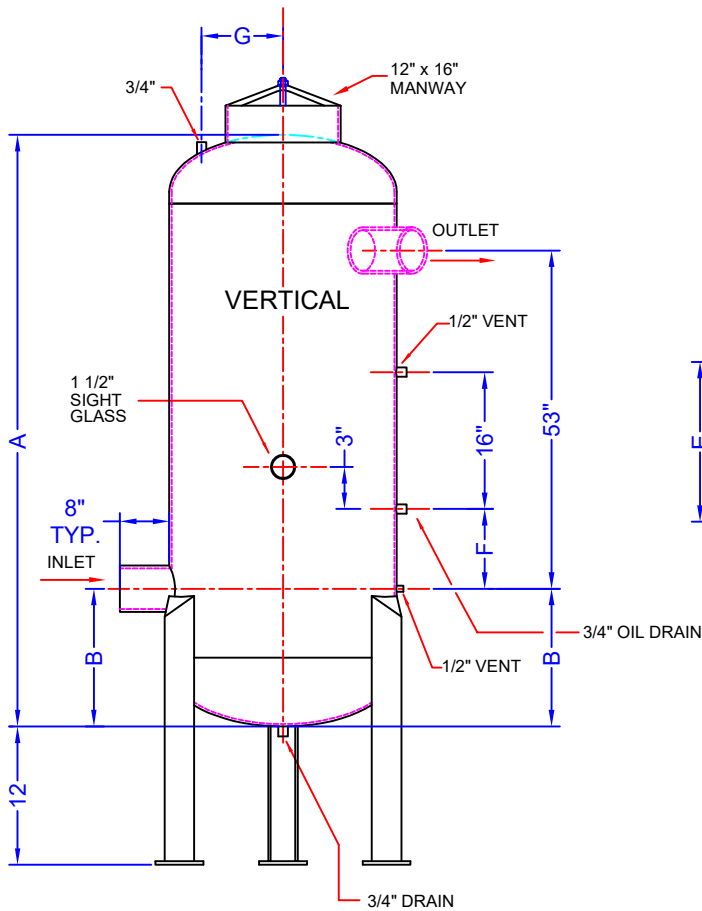


# DELTA TEE INTERNATIONAL, INC.

1000 COMMERCIAL BLVD SOUTH #100, ARLINGTON, TX 76001

TEL: (817) 466-9991 FAX: (817) 466-9979

## COALESCING OIL SEPARATOR OVER 250 DCFM



FLOW RATE MULTIPLIER FOR REFRIGERANTS:

R-717	1
R-22	0.746
R-290	0.85
R-134a	0.765
R-404a	0.703
R-410a	0.694
R-507a	0.682

MODEL NUMBER	DIMENSIONS (INCHES)										WEIGHT (LBS)
	RATING (DCFm)	DIA.	A	B	C	D	E	F	G	IN/OUT	
COS-24- 430	430	24	82	14 1/2	20	9	16	7	9	6	900
COS-30- 650	650	30	85	16	21 1/2	12	19	7	10	6	1350
COS-36-1050	1050	36	90	18 1/2	24	15	22	8	10	8	1850
COS-42-1440	1440	42	95	21	26 1/2	18	25	9	11	10	2300
COS-48-1920	1920	48	98	22 1/2	28	21	28	9	12	10	2900
COS-54-2380	2380	54	104	25 1/2	31	24	31	10	13	12	4100

- CAPACITY RATINGS ARE BASED ON AMMONIA.
- ALL DIMENSIONS ARE IN INCHES UNLESS OTHERWISE SPECIFIED.

Data provided for informational purposes and should not be used in actual design. Please consult factory for specific detailed engineered information.